

ZEROTECH

INSTRUCTION MANUAL

ZEROTECH REFLEX SIGHT

THRIVE HD

WARNING

KEEP BATTERIES OUT OF REACH OF CHILDREN



**THIS PRODUCT CONTAINS A COIN BATTERY.
THE BATTERY CAN CAUSE SEVERE OR FATAL INJURIES IN
2 HOURS OR LESS IF IT IS SWALLOWED OR PLACED
INSIDE ANY PART OF THE BODY.**

CONTENTS

PAGES

- 4** INTRODUCTION
- 5** LIFETIME WARRANTY
- 6** THRIVE HD REFLEX SIGHT FEATURES
- 8** BATTERY INSTALLATION
- 9** FUNCTIONS
- 10** FITTING THE THDRS28 TO YOUR FIREARM
- 12** PICATINNY RAIL FITMENT
- 14** WINDAGE AND ELEVATION ADJUSTMENTS
- 15** WARRANTY INFORMATION

INTRODUCTION

WELCOME TO THE ZEROTECH FAMILY!

Customer First - We listened to you and came up with a family of optics that will satisfy the needs of our most discerning and experienced customers.

Backed by Experience - ZeroTech enjoys 55 years of experience in the Optics Market supplying high quality brands to retailers throughout Australia and the Asia Pacific.

Built for the Australian Shooter - Designed and built to endure the harsh conditions of the Australian bush and the exacting demands of the precision shooter.

Lifetime Warranty - Be safe in the knowledge that your scope is backed by our Triple A Lifetime Warranty: **'ANY OWNER, ANY PROBLEM, ALWAYS COVERED'**.

LIFETIME WARRANTY

BACKED FOR LIFE!

Be safe in the knowledge that your scope is backed by our **Triple A Lifetime Warranty**:

- Fully transferable, covers accidental damage as well as defects in materials and workmanship.
- No receipt or warranty card is required.
- We will repair or replace product with equal or similar value and/or specifications.
- We will return product to you at no charge.



LIFETIME WARRANTY

**'ANY OWNER, ANY PROBLEM,
ALWAYS COVERED'**

THRIVE HD REFLEX SIGHT FEATURES



THDRS28H HIGH RISE

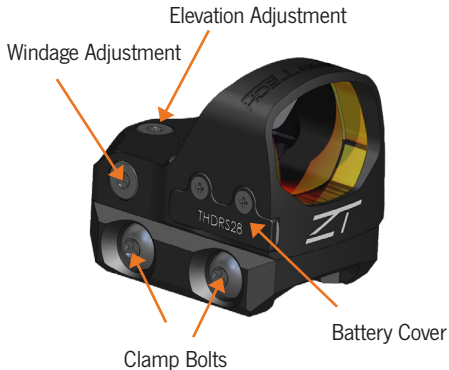


THDRS28L LOW MOUNT FOR
PICATINNY RAIL FITMENT



MOULDED RUBBER COVER

THRIVE HD REFLEX SIGHT FEATURES



BATTERY INSTALLATION

1. Loosen the two (2) T6 Torx screws and slide the battery cover retainer assembly away from the reflex sight.
2. Install the CR2032 battery directly into the sight with the positive terminal facing up.
3. Refit the battery cover retainer assembly. A small amount of pressure will be required to clip the battery cradle over the battery.
4. Refit the two (2) T6 Torx screws and tighten to 6 in lbs. Be careful not to overtighten these screws.



FUNCTIONS

- ▲ To activate the THDRS28 reflex sight, briefly depress either of the illumination brightness control buttons.
- ▲ Use either of the illumination brightness control buttons to adjust the brightness settings. There is a total of 11 illumination brightness settings.
- ▲ The THDRS28 reflex sight has an auto sleep/ auto activate function. If the sight is left undisturbed for 3 minutes, it will automatically enter sleep mode. As soon as the sight detects motion, it will resume the previously selected brightness setting.
- ▲ To shut down the THDRS28 reflex sight, hold either of the illumination brightness control buttons for 3 seconds. You will need to activate the sight by briefly pressing the button again before the next use.

FITTING THE THDRS28 TO YOUR FIREARM

BEFORE MOUNTING YOUR SCOPE TO A FIREARM, IT IS ESSENTIAL THAT YOU CONFIRM THAT YOUR FIREARM IS UNLOADED AND NO AMMUNITION IS PRESENT IN YOUR WORKSPACE.

TO AVOID DAMAGE AND TO PRESERVE YOUR WARRANTY, YOUR SCOPE SHOULD ALWAYS BE MOUNTED BY AN EXPERIENCED PROFESSIONAL.

FITTING THE THDRS28 TO YOUR FIREARM

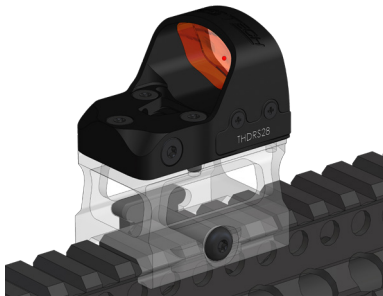
There are several possible ways to mount your THDRS28 reflex sight to your firearm.

- ▲ **Picatinny rail** – The THDRS28 comes fitted with either a low or high mount to enable the sight to be fitted directly to a picatinny rail. This mounting option is most likely to be used with a rifle, however certain shotguns and revolvers can also be fitted with a picatinny rail.
- ▲ **Direct mount** – Some pistols are available with pre inlet slides which will enable the THDRS28 to fit directly to your pistol. In this case, the picatinny mount can be completely removed and set aside.
- ▲ **Aftermarket mounts** – Like the direct mount for pistols, aftermarket mounts are available to enable a wide variety of mounting options. These can enable the THDRS28 to be mounted on top of a rifle scope, on a 45 degree offset on an AR or even enable mounting on a spotting scope. We recommend talking to your local store to discuss these options and many more.

PICATINNY RAIL FITMENT

The THDRS28 reflex sight is supplied with a high or low mount to enable it to be fitted to a picatinny rail.

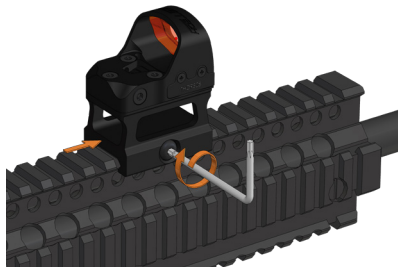
- ▲ Before attempting to fit to your firearm, use a T15 Torx key to loosen the clamp bolt(s) slightly to enable adequate clearance of the clamp so it can fit over the picatinny rail.
- ▲ Once you have achieved your desired position on the rail, apply slight forward pressure to the sight (push towards the muzzle) and tighten the T15 Torx clamp bolt(s).



PICATINNY RAIL FITMENT

It is recommended to use a torque wrench to achieve approximately 30 in lbs of tension on the clamp bolt(s).

- ▲ It is recommended to check the torque settings on the clamp bolts periodically.
- ▲ If you wish to apply a thread locking compound to the clamp screws, it is recommended to use a non-permanent compound such as Loctite 222.



WINDAGE AND ELEVATION ADJUSTMENTS

- ▲ Windage and elevation index (click) value is 1 MOA. This means that each click on the windage or elevation will shift your bullet impact approximately 1" at 100 yards (1/2" at 50 yards).
- ▲ Use a T10 TORX key to make adjustments.



WARRANTY & CONTACT INFORMATION

Company details;

ZEROTECH INTERNATIONAL PTY LTD

For all enquiries:

AUSTRALIA / INTERNATIONAL

Ph: +612 9938 3244

Email: sales@zerotech.com.au

Web: zerotech.com.au/warranty

Address:

PO BOX 7200,

Warringah Mall

NSW, 2100, AUSTRALIA

USA

Ph: 615-674-4755

Email: sales@zerotechoptics.com

Web: zerotechoptics.com/warranty

NOTES



zerotech.com.au / zerotechoptics.com





LIFETIME WARRANTY

'ANY OWNER, ANY PROBLEM, ALWAYS COVERED'

zerotech.com.au / zerotechoptics.com



ZERO-TECH 2022 | Specifications subject to change without notice